

EQUIPMENT AVAILABLE FOR IMMEDIATE SALE!



Canadian Autoparts Toyota, Inc. (CAPTIN)

MAJOR AUTOMOTIVE LIQUIDATION SALE



ANNUAL PRODUCTION CAP. 1.6 MILLION (6000 PER DAY) | EQUIPMENT AS NEW AS 2020

WHEEL MANUFACTURING | CASTING | MACHINING | PAINTING FACILITY

EQUIPMENT CURRENTLY IN PRODUCTION AND CAN BE VIEWED UNDER POWER UNTIL DEC. 2021

3200 WHEELS PER 24 HR. CAP.



2020 TWIN ROBOTIC PALLETIZER SYSTEM

NEW! NEVER BEEN USED IN PRODUCTION



2020 LPM BP3-2100 CASTING CELL

For Complete Information Please Contact: **Mike Seibold** | 604-675-2227 | Mike.Seibold@maynards.com

SALE CONDUCTED BY

Maynards
Industries Canada Ltd. SINCE 1902

AUCTIONS | LIQUIDATIONS | APPRAISALS

1585 West 4th Ave.,
Vancouver BC V6J 1L6
Tel: (604) 675-2227
Fax: (604) 876-2685

www.maynards.com

IN CONJUNCTION WITH



3246 W. Monroe St.,
Waukegan IL 60085-3029
Tel: (847) 360-9170
Fax: (847) 360-9189

diecastmachinery.com

NEW! NEVER BEEN USED IN PRODUCTION



2020 LPM BP3-2100 CASTING CELL



10F4

2006 ISUZU CAVITY CASTING CELLS



10F3

2006 ISUZU CAVITY CASTING CELLS



10F3

CANEFCO MELT FURNACES



10F3

CANEFCO MELT FURNACES

CASTING CELLS

- **2020 LPM BP3-2100 TC Low Pressure Die Casting Cell**, Approx. cap. 454 pcs/24 hrs Wheel Size Dependant, Cycle Time 190 Sc/pc, Product Size, 15" 6J to 24" X10.5J, Pressurization Unit, Die Cooling Unit 16 Channels Water/4 Channels Air (Flow Modulating Control Valves w/PID Control, Unloading Unit, Quench Tank and Transfer Device Fanuc Robot, Die Change Cart, Preheat Unit, Hyd Unit for Top & Side Die, AB Processors, Press Fixed Columns Clearance Longitudinal 2055/2090mm, Cross 977/1230mm, Mobile Platten Stroke 1420mm, Mobile Columns Diameter (Chromed Steel)110mm, Distance Between Mobile and Fixed Platen min. 540mm, Opening Force 200 KN, Closing Force 250 KN, Ejection Force 600 KN, Furnace Typology Basin Refractory Type (Double Chamber) Cap 2535 (1550 + 985) Kg, Power Rating 75 (15x5) kW, Temperature Regulation Thyristors, Working Pressure max1bar **(NEVER IN PRODUCTION)**
- **(4) 2006 ISUZU Cavity Casting Cells**, cap. 454 pcs/24 hrs Low Pressure, Product Size Aluminum Wheel Size from 15" 6J to 22" 10J, Pressurization Unit, Die Cooling Unit, Quench Tank and Transfer Device, Die Change Cart, Hyd Unit for Top Side Die, Casting Machine Control Panel, 2- Chamber Holding Furnace
- **(3) 2006 ISUZU Cavity Casting Cells**, cap. 454 pcs/24 hrs Low Pressure, Product Size Aluminum Wheel Size from 15" 6J to 22" 10J, Pressurization Unit, Die Cooling Unit, Quench Tank, Transfer Device, Die Change Cart, Hyd Unit for Top Side Die, Casting Machine Control Panel, 2- Chamber Holding Furnace 2006 Pyrotek Mod F-10855-11042, Holding Chamber cap. 1540 KG, Casting Chamber cap. 790 KG

FURNACES & HEAT TREAT

- **(3) CANEFCO Natural Gas Aluminum Melting Furnaces**, 9900 LB/HR, 4490 KG/HR, 4,075,000 Input BTU
- **(3) CANEFCO Natural Gas Alum. Melting Furnaces**, 9900 LB/HR, 4490 KG/HR, 4,075,000 Input BTU & Recycling Systems
- **2006 EISENMANN T6-Trayless Heat Treat Oven** Product Wheel Dia. = 15in to 22in, Wheel Width = 6JJ to 10JJ, Wheel Weight = 13.6 kg to 36 kg, Design Specs (Average Values), Wheel dia. = 18in (Approx. 523mm), Wheel Width = 8JJ (Approx. 251mm), Wheel Weight = 27 kg, Cycle Time = 26.7 Sec/Wheel (ie. 135 Wheels/hr), Cycle Time 20 sec/Wheel, Natural Gas, (3) Solution Zone Burners, (2) Aging Zone Burners
- **(3) Ladle Preheat Booths & Degassing Station**



10F2

HERRY CHIP SYSTEM



10F3

BCP SHOTBLAST SYSTEM



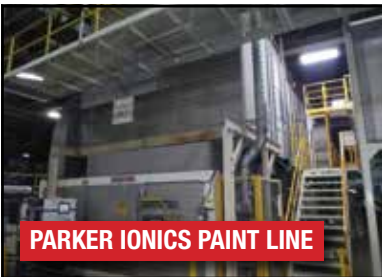
BCP SHOTBLAST SYSTEM



CAREFCO HEAT TREAT SYSTEM



2007 EISENMAN 250 WHEEL PER HOUR PAINT LINE



PARKER IONICS PAINT LINE



2018

PARKER IONICS R&D PAINT BOOTH



OFFLINE PAINT SUPPORT EQUIPMENT



MACHINE LINES, RISER CELL, DEBURR CELL & RECYCLE SYSTEM

- (4) **KANZAKI SHOUN & KIRA** Machine Lines: (2) Vertical Lathes and (1) Drilling Machine on Each Line with Inline Bath Leak Testers, Loesser Brush Machines, (3) Inline Wheel Wash Machines
- **2007 & 2010** Robotic Riser Cut-off Cells, Capacity Per Cell 1920 pcs/24 hrs ABB Model, IRB6640F Foundry Duty Robot IRC5 Controller, End-Effector with Tooling (Robot Clamp), Fox Cut-off Saw, Infeed Conveyor, Pick Station, Vision System (Conex Insight 5400) AB PLC
- Complete Chip Melting Recycling System, Feed Hopper Wringer, Transfer Conveyors, Rotary Trunnion Dryer, Twin Holding Pots
- **2016 DAIMA II** Aluminum Deburr and Brushing Robotic Cell cap. 1200 pcs/24 hr, 72 sec cycle time, 16"-21" cap., Safety Cell, Fanuc LR Mate 200iC Robot w/Pressure EOA Tool

PAINT SYSTEMS & RELATED EQUIPMENT

- **2007 EISENMAN** 250 Wheel/Hour Batch Lot Paint System dia. max. 22", dia. min. 16", width max. 10", width min. 6" hub hole 2 1/8"-4 3/4", 13-Stage Pre-treatment, Prime Powder Coating, Liquid Color Paint, Liquid Clear Coat
- **1988 PARKER IONICS** 200 Wheel/Hour Powder & Liquid Wheel Paint Line with (7) Motoman Robots, SS Non-chrome Pre-treatment line
- **2019 SAMES KREMLIN** PPH-707 Test Stand Offline Spray Testing System
- **NORDSON** Offline 180779-02 Powder Coat Booth
- **SAMES BELL** Spray Gun Testing Station
- **2018 R&D PARKER IONICS** 6-Head Paint Booth System
- **2008 ENPROTEC** Wastewater Treatment Plant with 2012 Kontek APC5 Filter Press, Biofilter



3200 WHEELS PER 24 HR. CAP.

2020 TWIN ROBOTIC PALLETIZER SYSTEM



2012 FISA ULTRA SONIC CLEANER

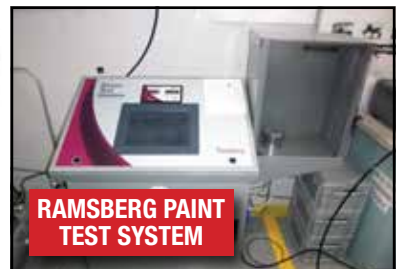


2018 KEYSTONE LASER ENGRAVER



2019

SAMES KREMLIN SPRAY GUN TESTING STATION



RAMSBERG PAINT TEST SYSTEM



2006 EISENMANN T6 TRAYLESS HEAT TREAT OVEN



SAMPLE OF (4) KANZAKI/SHOWN & KIBA CNC MACHINE LINES



10F8

LOESER BRUSH MACHINE



10F8

BATH LEAK TESTER



10F3

INLINE WASH MACHINE

SHOT BLAST, FILTERS & DUST COLLECTION

- MEFTIN Model 4001-2 Inline
- (2) BCP A4-7994 Inline System
- HENRY Model 2000 SID 2-3-8 CF & 34557D Filter Systems

DIE MAINTENANCE DEPARTMENT & MACHINE SHOP

- 2003 MAZAK INTEGREGX E 1060V, 5-Axis Machine Center
- 2006 MAZAK VRX-730-5X II, 5-Axis Machine Center
- 2002 MAZAK VTC-250D/50, 5-Axis Machine Center
- HAMAI TN-20, 3-Axis Machine Center
- MAZAK 18X60 Engine Lathe
- NAKAMURA ST-4SLM CNC Lathe
- HYDMECH S-20P Saw
- BCP A3-8172 Shot Blast System 72"x72"x48" Auto Load
- CANEFECO Heat Treat Furnace, Natural Gas 1000 btu/C.F, Input 2,100,000 btu/hr, max temp 600d, max cap net 3300 lb/hr
- 2012 FISA 2VST190 Ultrasonic Cleaning System

QUALITY CONTROL & TESTING DEPARTMENT

- 2014 VJT/FANUC VJT-CONV160CA-BA XRAY System with Fanuc Robot
- 2002 YXION MU2000 X-ray System
- CMM SYSTEMS Mitutoyo Crysta Apex 9168, Mitutoyo BHN210, Mitutoyo Bright 710
- INLINE VISION Inspection Systems As New As 2020
- 2018 KEYSTONE MD-X1000C 3-Axis Laser Engraver
- Balance Check Tester, (2) Bending Fatigue Machines, Wheel Hardness Tester, Impact Tester, Radial Fatigue Tester, Filiform Tester, Emersion & Cass Testers
- Die Maintenance Department & Machine Shop
- 2003 MAZAK INTEGREGX E 1060V, 5-Axis Machine Center
- 2006 MAZAK VRX-730-5X II, 5-Axis Machine Center
- 2002 MAZAK VTC-250D/50, 5-Axis Machine Center
- HAMAI TN-20, 3-Axis Machine Center
- MAZAK 18X60 Engine Lathe
- NAKAMURA ST-4SLM CNC Lathe
- HYDMECH S-20P Saw
- BCP A3-8172 Shot Blast System 72"x72"x48" Auto Load
- CANEFECO Heat Treat Furnace, Natural Gas 1000 BTU/C.F, Input 2,100,000 BTU/hr, Max Temp 600d, Max Cap Net 3300 lb/hr
- 2012 FISA 2VST190 Ultrasonic Cleaning System

PACKAGING

- 2020 YASKAWA MOTOMAN Twin Robotic Palletizer System up to 3200 wheels/24 hrs, 6 Different Models, 10 Load Stations, 6 Build Stations
- SIGNODE MH-P Automatic Strapping System
- 2007 CYKLOP Automatic Strapping System

MILLIONS OF DOLLARS OF NEW SPARE PARTS INVENTORY

GENERAL EQUIPMENT

- Spare Motoman, Fanuc & ABB Robots, Load and Unload Cells, (8) Plant Dust Collectors As New As 2012, Forklifts, Manlifts, Ladles, Die Racks, Overhead Cranes, Jib Cranes, Welders, Thousands of Feet of Power and Gravity Rollcase, Lista Cabinets, Tool Boxes, Self-Dump Hoppers, Scissor Lifts, Dust Collectors, Downdraft Tables, Cooling Towers, Chillers, (11) Compressors & Dryers As New As 2018, 2019 Algas Power Electric Vaporizer, Paint Mixing and Pumping Rooms, Pallet Racking, Large Qty. of Offices and More



2016 DAYMA DEBURR & BRUSH CELL



2002 YXION X-RAY SYSTEM



10F3

MITUTOYO CMM MACHINE



RADIAL FATIGUE TESTER



MAZAK VTC-250P



NAKAMURA ST45LM LATHE



IMPACT TESTER



RADIAL TESTER



BENDING FATIGUE TESTER



MAZAK INTEGREGX 5-AXIS



MAZAK VRX-730 5-AXIS



10F11

ATLAS-COPCO RADIAL SCREW COMPRESSOR



20F13

ATLAS AIR DRYER



10F7

DUST COLLECTION SYSTEM



2012

KONTEK FILTER PRESS



10F2

WASTE WATER TREATMENT PLANT



QTY. OF LISTA CABINETS



2019

ATLAS POWER VAPORIZER



10F2

HEAT EXCHANGER



10F4

OVERHEAD CRANES



SKYJACK SJIII SCISSORLIFT



TRANE CHILLERS

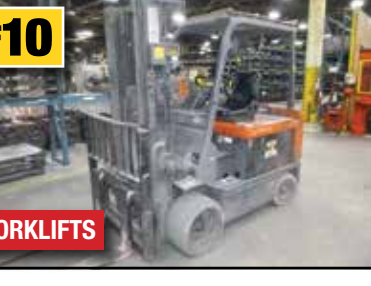


MILLIONS OF DOLLARS IN NEW SPARE PARTS INVENTORY



20F10

TOYOTA FORKLIFTS



EQUIPMENT AVAILABLE FOR IMMEDIATE SALE!



Canadian Autoparts Toyota, Inc. (CAPTIN)

MAJOR AUTOMOTIVE LIQUIDATION SALE

265,000 SQ. FT. FACILITY



LOCATED IN DELTA, BC (CANADA)

WHEEL MANUFACTURING, CASTING, MACHINING & PAINTING FACILITY

ANNUAL PRODUCTION CAP. 1.6 MILLION (6000 PER DAY)
EQUIPMENT AS NEW AS 2020

3200 WHEELS PER 24 HR. CAP.



2020 TWIN ROBOTIC PALLETIZER SYSTEM

NEW! NEVER BEEN USED IN PRODUCTION



2020 LPM BP3-2100 CASTING CELL

EQUIPMENT CURRENTLY IN PRODUCTION AND CAN BE VIEWED UNDER POWER UNTIL DECEMBER 2021

For Complete Information Please Contact: **Mike Seibold** | 604-675-2227 | Mike.Seibold@maynards.com

SALE CONDUCTED BY



AUCTIONS | LIQUIDATIONS | APPRAISALS

1585 West 4th Ave.,
Vancouver BC V6J 1L6
Tel: (604) 675-2227
Fax: (604) 876-2685

www.maynards.com

IN CONJUNCTION WITH



3246 W. Monroe St.,
Waukegan IL 60085-3029
Tel: (847) 360-9170
Fax: (847) 360-9189

diecastmachinery.com